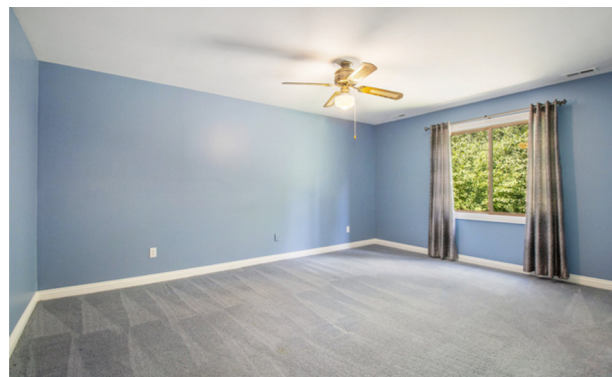




2351 Rochelle Park | \$250,000

Notable Features:

- Easy living and practical affordability
- Well-laid floor plan that maximizes space and privacy
- Private courtyard in front and patio in the backyard
- Decorated in neutral, welcoming tones throughout
- New vinyl flooring in easy-care kitchen and dining area
- Generous primary with walk-in closet & direct access to bath
- Additional bedroom with new plush carpeting
- Mature wooded backdrop adds additional privacy
- Convenient laundry within easy access to living areas
- Strategic and plentiful storage throughout
- New door wall in dining area 2024, new furnace 2021
- Attached 2-car garage with good storage capacity
- HOA covers grounds, ext. maintenance, trash & snow removal
- Community clubhouse with pool and tennis courts
- Avondale- Woodland Elem, Avondale Middle, Avondale High
- Minutes from downtown Rochester, local parks, and more



Gwen Daubenmeyer

833-333-GWEN

Gwen@TheIntegrityTeam.com

www.TheIntegrityTeam.com

